



Generated by Lori Brooks from Evans City-Seven Fields Regional Police on Jan 30, 2020 at 1:17:5 PM

Time of Day: 0:00 to 23:59

Dates: 12/27/2019 to 1/4/2020

Medium Risk Threshold: Speed Limit + 10

High Risk Threshold: Speed Limit + 20

Time View: By Hour (Avg Volumes)

Speed Bins: Size 5, Range 1 to 100

Site: Harrison St at South Washington St, NB

Date/Time Range	Speed Limit	Mode	Compliant	Low Risk	Medium Risk	High Risk	Total Num Vehicles
0:00	25	Speed Display	4	8	3	0	14
1:00	25	Speed Display	2	6	1	0	9
2:00	25	Speed Display	2	5	1	0	8
3:00	25	Speed Display	2	7	1	0	10
4:00	25	Speed Display	4	11	3	0	18
5:00	25	Speed Display	7	16	5	0	28
6:00	25	Speed Display	10	39	8	0	57
7:00	25	Speed Display	13	70	13	1	96
8:00	25	Speed Display	14	60	16	0	91
9:00	25	Speed Display	17	65	19	0	102
10:00	25	Speed Display	15	71	16	0	103
11:00	25	Speed Display	14	75	21	1	111
12:00	25	Speed Display	18	79	17	0	115
13:00	25	Speed Display	15	75	21	0	111
14:00	25	Speed Display	16	75	17	0	108
15:00	25	Speed Display	26	107	24	0	157
16:00	25	Speed Display	19	102	23	0	144
17:00	25	Speed Display	14	81	19	0	114
18:00	25	Speed Display	11	47	11	0	69
19:00	0,25	Speed Display	8	34	9	8	59
20:00	0,25	Speed Display	7	22	8	7	44
21:00	0,25	Speed Display	5	17	5	4	31
22:00	25	Speed Display	4	15	4	0	23
23:00	25	Speed Display	3	12	3	0	18
Avg # Vehicles			10	46	11	1	68



Generated by Lori Brooks from Evans City-Seven Fields Regional Police on Jan 30, 2020 at 1:17:5 PM

Time of Day: 0:00 to 23:59

Dates: 12/27/2019 to 1/4/2020

Medium Risk Threshold: Speed Limit + 10

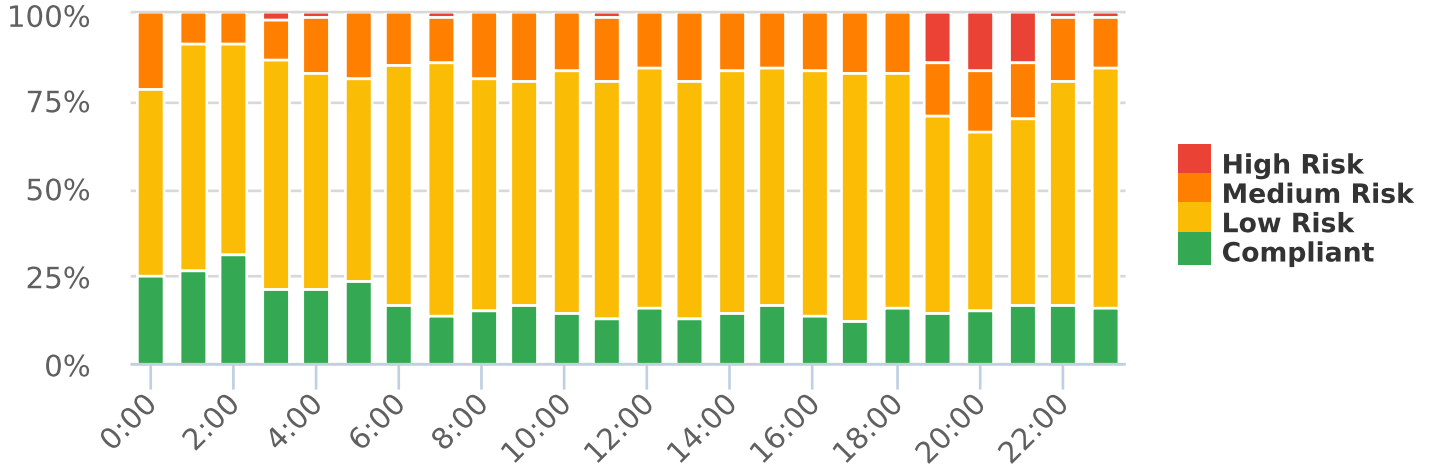
High Risk Threshold: Speed Limit + 20

Time View: By Hour (Avg Volumes)

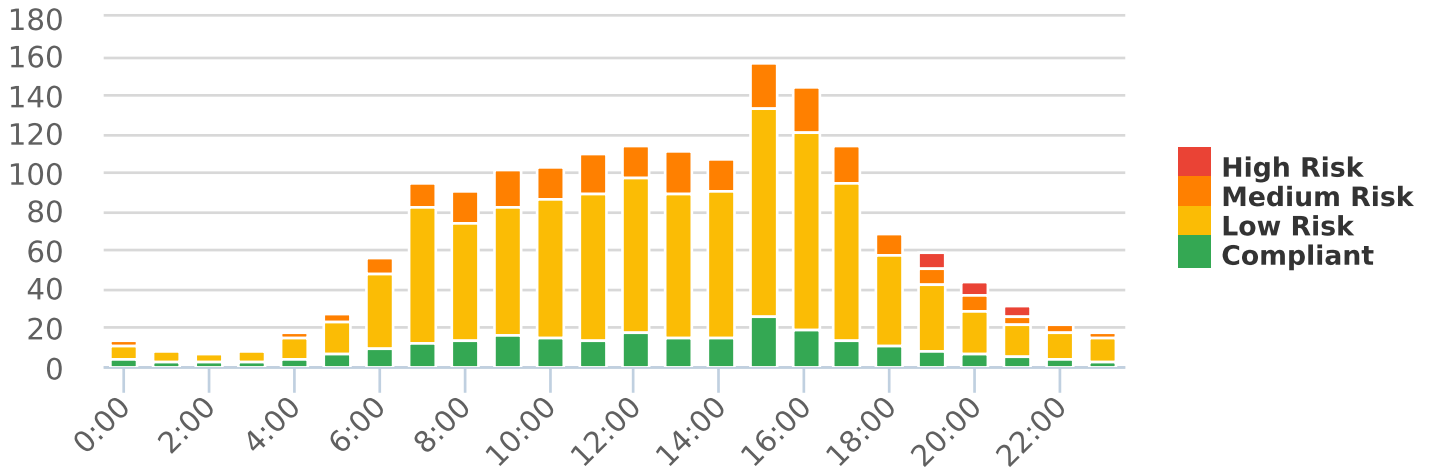
Speed Bins: Size 5, Range 1 to 100

Site: Harrison St at South Washington St, NB

Compliance % by Hour



Compliance by Hour



Speeds

