



Generated by Lori Brooks from Evans City-Seven Fields Regional Police on Jan 30, 2020 at 1:26:53 PM

Time of Day: 0:00 to 23:59

Dates: 11/12/2019 to 12/9/2019

Medium Risk Threshold: Speed Limit + 10

High Risk Threshold: Speed Limit + 20

Time View: By Hour (Avg Volumes)

Speed Bins: Size 5, Range 1 to 100

Site: Sycamore, SB

Date/Time Range	Speed Limit	Mode	Compliant	Low Risk	Medium Risk	High Risk	Total Num Vehicles
0:00	0,25	Speed Display	0	1	0	1	1
1:00	25	Speed Display	0	1	0	0	1
2:00	0,25	Speed Display	0	1	0	0	1
3:00	0,25	Speed Display	0	1	0	0	1
4:00	0,25	Speed Display	0	1	0	0	1
5:00	0,25	Speed Display	0	2	0	1	3
6:00	0,25	Speed Display	1	3	0	2	6
7:00	0,25	Speed Display	3	14	1	8	26
8:00	0,25	Speed Display	2	9	0	4	16
9:00	0,25	Speed Display	2	9	0	5	16
10:00	0,25	Speed Display	1	4	0	3	9
11:00	0,25	Speed Display	2	8	0	4	14
12:00	0,25	Speed Display	1	7	0	4	12
13:00	25,0	Speed Display	2	6	0	4	11
14:00	25,0	Speed Display	1	7	0	4	12
15:00	25,0	Speed Display	2	9	0	3	13
16:00	25,0	Speed Display	3	9	0	4	15
17:00	25,0	Speed Display	3	7	0	3	14
18:00	25,0	Speed Display	1	4	0	1	6
19:00	0,25	Speed Display	1	4	0	1	6
20:00	0,25	Speed Display	1	2	0	1	4
21:00	0,25	Speed Display	0	1	0	1	2
22:00	0,25	Speed Display	0	1	0	0	1
23:00	0,25	Speed Display	0	1	0	0	1
Avg # Vehicles			1	5	0	2	8



Generated by Lori Brooks from Evans City-Seven Fields Regional Police on Jan 30, 2020 at 1:26:53 PM

Time of Day: 0:00 to 23:59

Dates: 11/12/2019 to 12/9/2019

Medium Risk Threshold: Speed Limit + 10

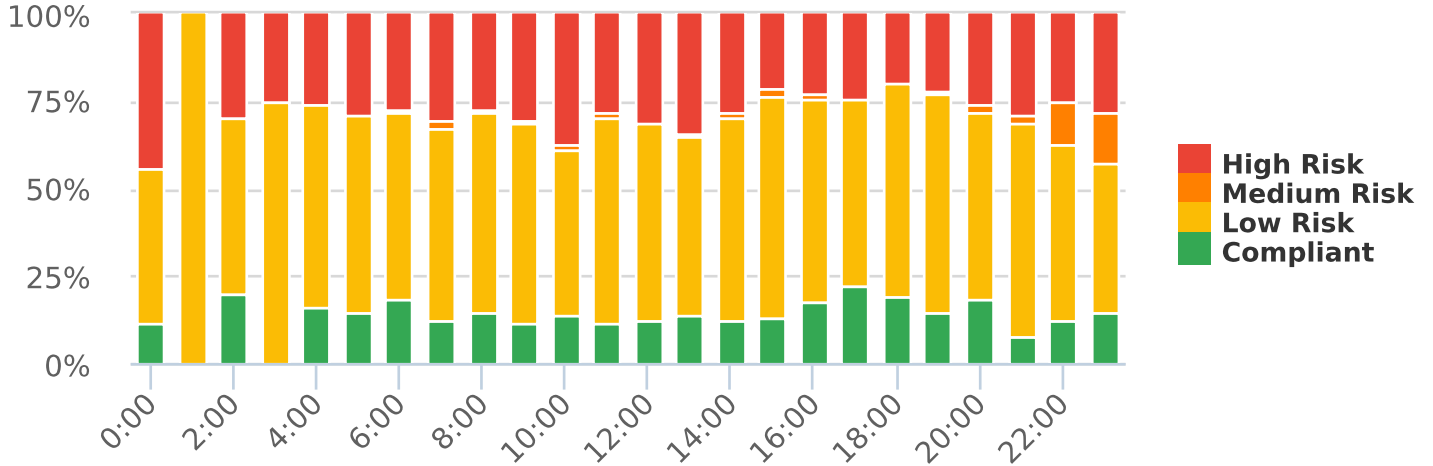
High Risk Threshold: Speed Limit + 20

Time View: By Hour (Avg Volumes)

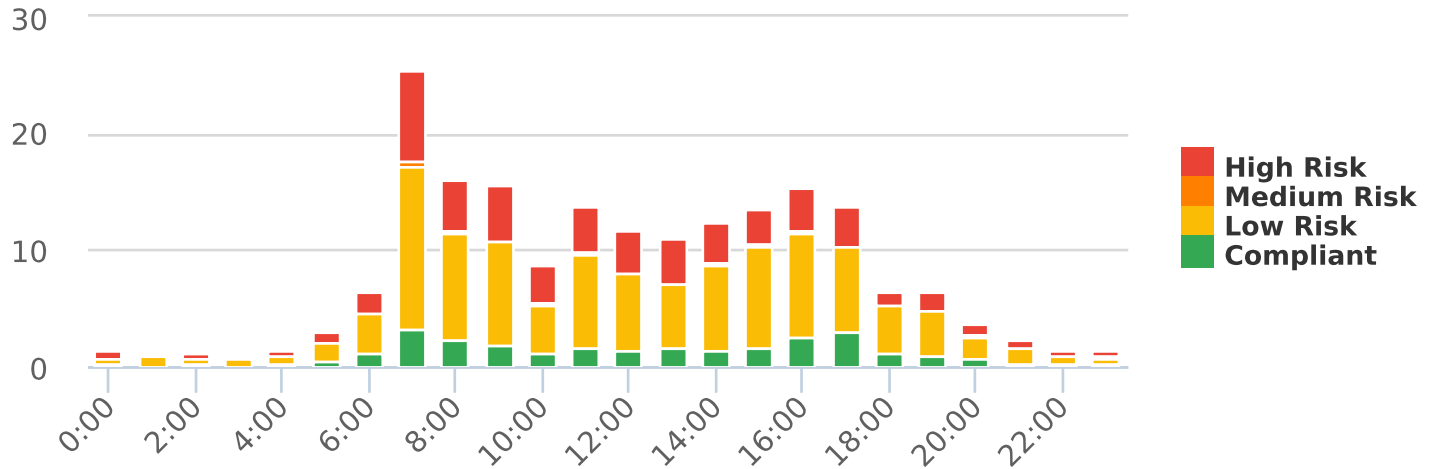
Speed Bins: Size 5, Range 1 to 100

Site: Sycamore, SB

Compliance % by Hour



Compliance by Hour



Speeds

